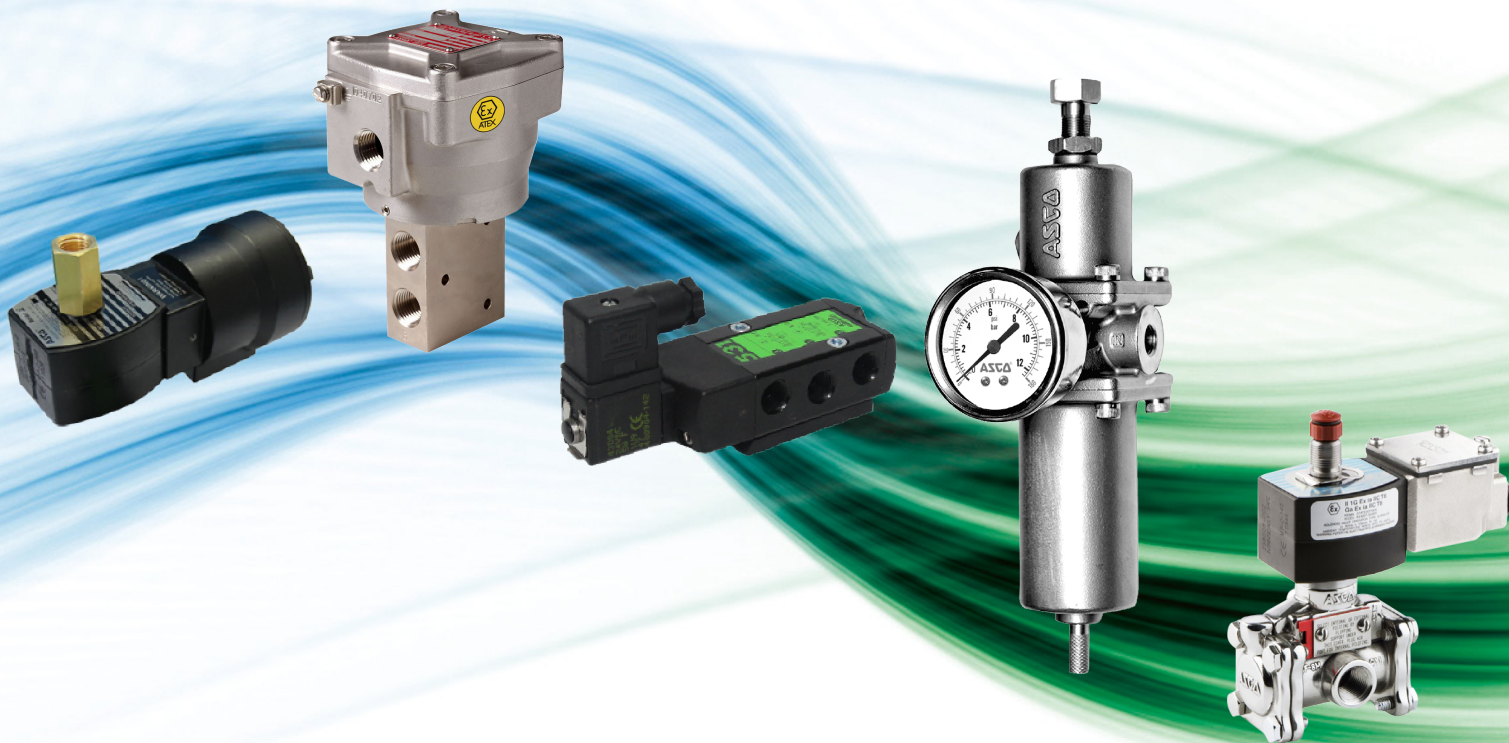


ASCO EXPRESS™

Asia Pacific Express Catalog

Process



Series	Page
210 :	2
223 :	4
262 :	5
314 :	6
316 :	7
320 :	9
327 :	10
342 :	13
344 :	14
345 :	15
531 :	16
551 :	17
553 :	20
SSFR :	21
651&652 :	22
VCEF/VCEV Installation :	23

The lead time is business 10 days for any items in this catalogue with quantity equal to or less than 10 pieces for each part number. Over quantity of 10 pieces, please contact with ASCO.

SPECIFICATIONS

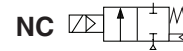
Pipe Size	Orifice Size	Flow Coefficient Kv		Operating Pressure Differential (bar)						Prefix								No Prefix	Catalog Number		Option					
				Max. (PS)						SC	PV	VC	EF/VCEF ⁽³⁾	NF/NFET	JKF/JKH	HT	HB		HC	WP	Brass	Stainless Steel	FPM	EPDM		
				Air		Water		Oil																		
NC - Normally closed																										
1 1/4	28	12.8	213	0	9	6	9	6	9	6	●	-	-	-	●	-	-	-	-	●	-	◇210B155	-	V	-	
1 1/4	29	13	216	0.3	10	9	10	9	7	9	●	-	●	-	●	●	-	-	-	●	-	8210G008	-	V	-	
1 1/4	28	12.8	213	0	9	9	9	9	9	9	●	-	-	-	●	-	-	-	-	●	-	E210D008	-	V	-	
1 1/2	32	19.5	325	0	10	7	9	7	9	6	-	-	●	●	-	-	●	-	-	●	-	8210G056 ⁽²⁾	-	V	-	
1 1/2	32	19.5	325	0	10	7	9	7	9	6	●	-	-	-	●	-	-	-	-	●	-	◇210B156	-	V	-	
1 1/2	32	19.5	325	0.3	10	9	10	9	7	9	●	-	●	-	●	●	-	-	-	●	-	8210G022	-	V	-	
1 1/2	32	19.3	322	0.35	9	9	9	9	9	9	●	-	-	-	●	-	●	-	-	●	-	◇210D022	-	V	-	
1 1/2	32	19.3	322	0.7	20	16	20	14	20	14	●	-	-	-	●	-	●	-	-	●	-	◇210B082	-	V	-	
1 1/2	32	19.3	322	0.35	9	9	9	9	9	9	●	-	-	-	●	-	●	-	-	●	-	-	◇210A127	V	-	-
2	44	37	617	0.35	9	3	9	3	6	3	●	-	-	-	●	-	●	-	-	●	-	◇210-100	-	V	-	
2	44	37	617	0.3	10	6	9	3	3	3	●	-	●	-	●	●	-	-	-	●	-	8210G100	-	V	-	
Gas shut-off - Normally closed																										
1/2	16	3.1	52	0.3	17	-	-	-	-	-	-	-	●	●	-	-	-	-	-	●	-	8210G106B	-	-	-	
1/2	16	3.1	52	0	3.4	-	-	-	-	-	●	-	●	●	-	-	●	-	-	●	-	8210G075	-	-	-	
3/4	16	4.3	72	0	3.4	-	-	-	-	-	●	-	●	●	-	-	●	-	-	●	-	8210G076	-	-	-	
NO - Normally open																										
1/2	16	3.4	57	0	10	9	10	9	9	6	●	-	●	●	-	●	●	-	●	-	●	-	8210G034	-	V	-
1/2	16	3.4	57	0	9	9	9	9	9	5	●	-	-	-	●	-	●	-	-	●	-	◇210C034	-	V	-	
1/2	16	2.6	43	0	10	9	10	9	7	6	-	-	-	-	●	-	●	-	-	●	-	-	◇210B030	V	-	-
3/4	16	2.6	43	0	10	9	10	9	7	6	●	-	●	●	-	●	●	-	-	●	-	8210G038	-	V	-	
3/4	16	2.6	43	0	10	9	10	9	7	6	-	-	-	-	●	-	●	-	-	●	-	◇210B038	-	V	-	
3/4	19	4.7	79	0	10	9	0	9	9	6	●	-	●	●	-	●	●	-	●	-	●	-	8210G035	-	V	-
3/4	19	4.7	79	0	10	9	10	9	9	6	●	-	-	-	●	-	●	-	-	●	-	◇210C035	-	V	-	
1	25	11.2	185	0	9	-	9	-	9	-	●	-	-	-	●	-	●	-	-	●	-	◇210B057	-	-	-	
1	25	11.1	185	0.35	9	9	9	9	9	9	-	-	-	-	●	-	-	-	-	●	-	8210D014	-	-	-	
1 1/2	32	19.5	325	0.3	10	-	10	-	9	-	●	-	●	●	-	-	-	-	-	●	-	8210G032	-	-	-	

- Available Express
- (1) DC only
- (2) In case of AC, the standard voltage will be 110V/50 Hz; 120V/60 Hz; 220V/50 Hz; 240V/60 Hz
- (3) Please refer to the page 69 for VCEF installation
- (4) 0.3 bar on Air; 0.0 bar on Water
- (5) Additional Express model: 8210G094HW, ◇210D002MO, 8210G009MO, 8210G009HW & 8210G034VM
- ◇ Stands for options of "B or 8" for NPT port thread and "E" for BSP port thread



SOLENOID VALVES

high pressure
brass or stainless steel bodies
1/4" - 3/4"



2/2
Series
223

FEATURES

- Rugged piston construction built to withstand pressure ratings to 1500 psi
- Angle body design for high flows
- Ideal for high-pressure water applications, such as car washes
- Mountable in any position



STANDARD VOLTAGES

DC (=) : 24V
 AC (-) : VC, EF/VCEF, Redhat II 110V/50Hz-120V/60Hz; 220V/50Hz-240V/60Hz
 SC, NF 115V/50Hz; 120V/60 Hz; 230V/50Hz

SPECIFICATIONS

Pipe Size (in)	Orifice Size (mm)	Kv Flow Factor (m ³ /h)	Operating Pressure Differential (bar)							Max. Fluid Temp. °C		Prefix					No Prefix	Catalog Number	
			Min.	Max. AC			Max. DC			AC	DC	SC	VC	EF/VCEF ⁽¹⁾	NF/NFET	HB		Brass	Stainless Steel
				Air-Inert Gas	Water	Light Oil @ 300 SSU	Air-Inert Gas	Water	Light Oil @ 300 SSU										
NC - Normally closed (Closed when de-energized)																			
3/8	8	1.3	0.7	52	52	52	28	28	28	93	65	-	-	•	-	-	•	8223G023	-
1/2	10	2.7	1.7	103	103	103	34	34	34	93	65	-	•	•	-	•	•	8223G003	-
1/2	9	2.7	1.8	100	100	100	35	35	35	90	90	-	-	-	•	-	-	-	B223A010
1/2	10	2.7	1.7	103	103	103	34	34	34	93	65	•	•	•	-	•	•	-	8223G010
3/4	19	6.7	1.8	50	50	50	20	20	20	90	90	-	-	-	•	-	-	B223B005	-
3/4	19	6.7	1.7	52	52	52	31	31	31	93	65	•	-	-	-	-	•	8223G005	-
3/4	19	6.7	1.8	50	50	50	20	20	20	90	90	-	-	-	•	-	-	-	B223A012
3/4	19	6.7	1.7	52	52	52	31	31	31	93	65	-	-	•	-	-	•	-	8223G012

• Available Express
 (1) Please refer to the page 69 for VCEF installation

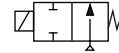




SOLENOID VALVES

direct operated
brass or stainless steel bodies
1/8" - 3/8"

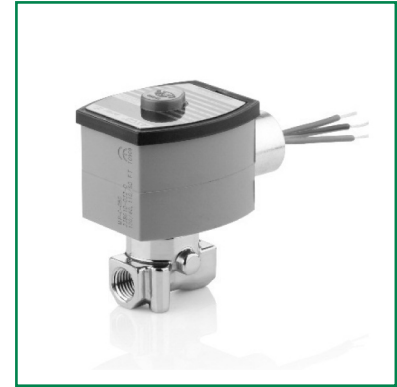
NO



2/2
Series
262

FEATURES

- Reliable, proven design with high flows
- Small poppet valves for tight shutoff
- Wide range of elastomers for specialty service
- Mountable in any position
- Brass and stainless steel constructions



STANDARD VOLTAGES

DC (=) : 24V
AC (-) : SC, EF/VCEF, Redhat II 110V/50Hz-120V/60Hz; 220V/50Hz-240V/60Hz
NF, WP 115V/50Hz; 120V/60Hz; 230V/50Hz

SPECIFICATIONS

Pipe Size (in)	Orifice Size (mm)	Kv Flow Factor (m³/h)	Operating Pressure Differential (bar)						Max. Fluid Temp °C		Prefix						No Prefix	Catalog Number	
			Max AC @ 55°C			Max DC @ 55°C			AC	DC	SC	EF/VCEF ⁽¹⁾	NF/NFET	JKF/JKH	HT	WP		Brass	Stainless Steel
			Air-Inert Gas	Water	Lt. Oil @300 SSU	Air-Inert Gas	Water	Lt. Oil @300 SSU											
NC - Normally closed																			
1/8	3.2	0.3	11	12	9	5	5	5	90	90	-	-	•	-	-	•	-	❖262C002	-
1/8	3.2	0.3	13	12	8	8	7	6	82	82	•	•	-	-	-	-	•	8262H002	-
1/4	2.4	0.17	25	25	11	10	8	8	90	90	•	-	•	-	•	•	-	❖262C020	-
1/4	3.2	0.3	9	11	6	4	4	4	90	90	•	-	•	-	-	•	-	❖262C022	-
1/4	3.2	0.3	20	20	13	5.0	4.0	4.0	90	90	-	-	•	-	-	•	-	❖262D232	-
1/4	4	0.43	12	13	10	2.5	2.5	3	90	90	-	-	•	-	-	•	-	❖262C202	-
1/4	4	0.45	14	14	10	4	4	4	82	82	•	•	-	•	•	-	•	8262H202	-
1/4	5.6	0.63	7	7	7	2	2	2	82	82	•	•	-	•	•	-	•	8262H208	-
1/4	5.6	0.63	6.5	6.5	6.5	1.7	1.7	1.7	90	90	•	-	•	-	-	•	-	❖262C208	-
1/4	7	0.75	6	6.5	6	1.7	1.3	1.3	90	90	-	-	•	-	-	•	-	❖262B212	-
1/4	2.4	0.15	25	23	11	10	8	8	90	90	-	-	•	-	•	•	-	-	❖262C086
1/4	3.2	0.3	9	11	8	4	4	4	90	90	-	-	•	-	-	•	-	-	❖262C007
1/4	3.2	0.3	13	12	6	8.0	7.0	6.0	82	82	•	•	-	-	-	-	•	-	8262H007
1/4	4	0.43	12	13	10	2.5	2.5	3	90	90	-	-	•	-	-	•	-	-	❖262C220
1/4	4	0.45	14	14	10	-	-	-	82	-	•	•	-	•	•	-	•	-	8262H220
1/4	5.6	0.62	6.5	6.5	6.5	1.7	1.7	1.7	90	90	-	-	•	-	-	•	-	-	❖262C226
1/4	5.6	0.73	2.5	3	2.5	1.2	1.3	1.3	90	90	-	-	•	-	-	•	-	-	❖262C036
NO - Normally open																			
1/4	1.2	0.05	52	52	52	45	39	28	82	82	•	•	-	•	•	-	•	❖262H260	-
1/4	2.4	0.17	20	17	16	13	10	8	40	40	-	-	•	-	-	•	-	-	❖262A134
1/4	2.4	0.18	19	16	12	11	9	7	82	82	•	•	-	•	•	-	•	-	❖262H261
1/4	3.2	0.3	9	7	6.5	5.5	4	4	90	90	-	-	•	-	-	•	-	-	❖262A138
1/4	3.2	0.3	11	10	9	7	7	5	82	82	•	•	-	•	•	-	•	-	❖262H138
1/4	4	0.43	5.5	5	4	3	3	3	90	90	-	-	•	-	-	•	-	-	❖262A263

• Available Express
(1) Please refer to the page 69 for VCEF installation
❖ Stands for options of "B or 8" for NPT port thread and "E" for BSP port thread





SOLENOID VALVES

1.4 W low power
brass or stainless steel bodies
1/4"

3/2
Series
314

FEATURES

- Molded one-piece solenoid with highly efficient solenoid cartridge and special low wattage coil
- Increased ambient temperature capabilities up to 175°F (80°C)
- Designed for use in automation of plant control systems to provide:
 - PLC compatibility
 - Reduced battery drain
 - Reduced heat rise
 - Reduced wiring cost
- Air or inert gas only



STANDARD VOLTAGES

DC (=) : 24V

SPECIFICATIONS

Pipe Size (in)	Orifice Size (mm)	Kv Flow Factor (m ³ /h)		Operating Pressure Differential (bar)		Max. Fluid and Ambient Temp. °C	Prefix				No Prefix	Catalog Number	
				Air-Inert Gas			VC	EF/VCEF ⁽¹⁾	EV	JPIS/JSIS		Brass	Stainless Steel
		Pressure to Cylinder	Cylinder to Exhaust	Min.	Max.								
3/2 Valves, Universal operation (Normally closed or Normally open) with NBR disc - SIL 3 capable, Certified by Exida													
1/4	2	0.07	0.07	0	10	60	●	●	●	-	●	8314G300	8314G301 ⁽²⁾
1/4	2	0.07	0.07	0	10	60	-	-	-	●	-	8314B300	8314B301

● Available Express

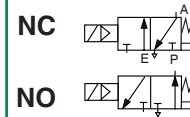
(1) Please refer to the page 69 for VCEF installation

(2) TPL 24001 also available



SOLENOID VALVES

air and water, high flow
brass or stainless steel bodies
1/4" - 3/4" NPT



3/2
Series
316

FEATURES

- Diaphragm poppet valves suitable for controlling air, inert gas, and liquids
- Internal piloting controls large orifices to provide high flows
- Can be used to pilot large actuators to provide quick closing of large control valves
- Resilient seating for tight shutoff
- Mountable in any position



STANDARD VOLTAGES

DC (=) : 24V; 125V(HC)
 AC (-) : VC, EF/VCEF, EV/VCEV, Redhat II 110V/50Hz-120V/60Hz; 220V/50Hz-240V/60Hz
 NF/WSNF 115V/50Hz; 120V/60Hz; 230V/50Hz

SPECIFICATIONS

Pipe Size (in)	Orifice Size (mm)	Kv Flow Factor (m ³ /h)		Operating Pressure Differential (bar)		Prefix										No Prefix	Catalog Number		Suffix	
				Inert Gas		VC	EF/VCEF ⁽²⁾	EV/VCEV ⁽²⁾	NF/WSNF	NFET/WSNFET	JKF/JKH	HT	HC	Brass Body	Stainless Steel					
		Pressure to Cylinder	Cylinder to Exhaust	Min.	Max.															
NORMALLY CLOSED (Closed when de-energized)																				
1/4	8	1.3	1.3	(1)	10	-	-	●	-	-	●	●	●	●	-	8316G081V	MB	MO		
3/8	8	1.3	1.3	(1)	10	-	-	●	-	-	●	●	●	●	-	8316G082V	MB	MO		
1/2	16	3.4	56.6	(1)	10	-	-	●	-	-	●	●	●	●	-	8316G084V	-	-		
1/2	16	3.4	56.6	(1)	10	-	-	-	●	●	-	-	-	-	-	B316A084V	MB	-		
1/2	16	2.7	2.7	0.7	10	●	●	-	-	-	●	●	-	●	8316G064	-	-	-		
1/2	16	2.8	2.8	0.7	8.5	-	-	-	■	-	-	-	-	-	B316A064	-	MB	-		
3/4	17	4.1	4.1	0.7	10	●	●	-	-	-	●	●	-	●	8316G074	-	-	-		

- Available Express
- (1) Zero minimum when valve selection gasket is in external position and proper auxiliary air pressure is applied. Minimum 1.0 bar operating pressure differential when selection gasket is in the internal position.
- (2) Please refer to the page 69 for VCEF & VCEV installation



LOW POWER SOLENOID VALVES

stainless steel bodies
1/4" - 1/2" NPT

3/2
Series
316

FEATURES

- Brass body construction for general atmospheres; stainless steel for corrosive atmospheres
- Can be internally piloted, or externally piloted to convert valve to zero minimum operation by flipping a gasket
- When externally piloted, loss of electrical power or auxiliary air exhausts air from the actuator and shifts process valve to its original position
- When internally piloted, loss of electric power returns the valve to its original position
- Also available with Low Power or Intrinsically Safe solenoids. See Special Service Valve Section



STANDARD VOLTAGES

DC (=) : 24V

SPECIFICATIONS

Pipe Size (in)	Orifice Size (mm)	Kv Flow Factor (m ³ /h)		Operating Pressure Differential (bar)		Prefix							No Prefix	Catalog Number		Suffix
				Min.	Max.	EV/VCEV ⁽²⁾	NF/WSNF	NFET/WSNFET	HT	MF	JSIS	Stainless Steel				
		Pressure to Cylinder	Cylinder to Exhaust													
3/2 VALVES, NORMALLY CLOSED (Closed when de-energized) with NBR Disc – SIL 3 Capable, Certified by Exida																
1/4	8	1.3	1.3	(1)	9	●	-	-	-	●	-	●	8316G381V	MB	MO	
1/4	8	1.3	1.3	(1)	9	●	-	-	●	-	-	●	8316H381V	MB	MO	
1/4	8	1.3	1.3	(1)	9	-	-	-	-	-	●	-	8316B381V	MB	MO	
1/4	8	1.3	1.3	(1)	10	-	●	●	●	-	-	-	B316A381V	MB	MO	
3/8	8	1.37	1.37	(1)	10	●	-	-	-	●	-	●	8316G382V	MB	MO	
3/8	8	1.6	1.6	(1)	9	●	-	-	●	-	-	●	8316H382V	MB	MO	
3/8	8	1.6	1.6	(1)	9	-	-	-	-	-	●	-	8316B382V	MB	MO	
3/8	8	1.6	1.6	(1)	9	-	●	●	●	-	-	-	B316A382V	MB	MO	
1/2	16	4	4	(1)	10	●	-	-	-	●	-	●	8316G384V	MB	MO	
1/2	16	3.5	3.5	(1)	9	●	-	-	●	-	-	●	8316H384V	MB	MO	
1/2	16	3.5	3.5	(1)	9	-	-	-	-	-	●	-	8316B384V	MB	MO	
1/2	16	3.5	3.5	(1)	9	-	●	●	●	-	-	-	B316A384V	MB	MO	

● Available Express

(1) Zero minimum when valve selection gasket is in external position and proper auxiliary air pressure is applied.

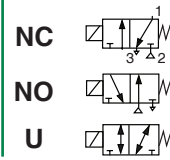
Minimum 1.0 bar operating pressure differential when selection gasket is in the internal position.

(2) Please refer to the page 69 for VCEV installation



SOLENOID VALVES

general service
brass or stainless steel bodies
1/4"



3/2
Series
320

FEATURES

- All NPT connections are in the valve body to allow in-line piping
- No minimum operating pressure differential required
- Broadest range of applications
- Mountable in any position



STANDARD VOLTAGES

DC (=) : 24V; 125V(HC)
 AC (-) : VC, EF/VCEF, Redhat II 110V/50Hz-120V/60Hz; 220V/50Hz-240V/60Hz
 SC, NF, WP 115V/50Hz; 120V/60Hz; 230V/50Hz

SPECIFICATIONS

Pipe Size (in)	Orifice Size (mm)	Kv Flow Factor (m ³ /h)	Operating Pressure Differential (bar)						Prefix														No Prefix	Catalog Number		Option							
			Max. AC			Max. DC			SC	VC	EF/VCEF ⁽³⁾	EV/VCEV ⁽³⁾	NF/WSNF	NFET/WSNFET	JKF/JKH	HB	HC	HT	WP	Brass	Stainless Steel												
			Air-Inert Gas	Water	Lt. Oil @ 300 SSU	Air-Inert Gas	Water	Lt. Oil @ 300 SSU																									
U - Universal																																	
1/4	1.6	0.08	9	9	9	5	5	5	-	-	-	-	•	•	-	-	-	•	•	-	-	-	-	-	-	-	B320A172 ⁽⁴⁾	-	MO	MS	E	-	
1/4	1.6	0.08	9	9	9	5	5	5	•	•	•	•	-	-	•	•	•	•	-	•	•	-	•	-	-	-	8320G172	-	MO	-	-	-	
1/4	2.4	0.1	7	7	7	4	4	4	•	-	-	-	•	-	-	-	-	•	•	-	-	-	-	-	-	-	B320B174	-	MO	MS	-	MB	
1/4	2.4	0.1	7	7	7	4	4	4	•	•	•	-	-	-	-	-	-	• ⁽¹⁾	• ⁽²⁾	•	• ⁽¹⁾	-	•	-	-	-	8320G174	-	MO	-	-	-	
1/4	3.2	0.21	3	3	3	2	2	2	•	-	-	-	•	•	-	-	-	-	-	-	-	-	-	-	-	-	B320B176	-	MO	-	-	-	
1/4	3.2	0.21	3	3	3	2	2	2	-	-	•	•	-	-	-	-	-	• ⁽¹⁾	• ⁽²⁾	•	• ⁽¹⁾	-	•	-	-	-	8320G176	-	MO	-	-	-	
1/4	4.4	0.3	1	1	1	1	1	1	•	-	•	•	-	-	-	-	-	-	-	-	-	-	-	-	-	-	8320G178	-	-	-	-	-	
1/4	2.4	0.1	7	7	7	4	4	4	•	-	-	-	•	•	-	-	-	•	•	-	•	•	-	-	-	-	-	B320A200	MO	MS	V	-	
1/4	2.4	0.1	7	7	7	4	4	4	-	•	•	•	-	-	-	-	-	• ⁽¹⁾	• ⁽²⁾	•	• ⁽¹⁾	-	•	-	-	-	8320G200	-	-	-	-	-	
1/4	2.4	0.1	7	7	7	4	4	4	•	-	-	-	-	-	-	-	-	-	-	-	-	-	-	-	-	-	B320A201	-	-	-	-	-	
1/4	3.2	0.21	3	3	3	2	2	2	-	•	•	•	-	-	-	-	-	-	-	-	-	-	-	-	-	-	-	8320G201	-	-	-	-	-
NC - Normally closed																																	
1/4	0.8	0.02	50	50	50	35	35	35	-	-	-	-	-	-	-	-	-	-	-	-	-	-	-	-	-	-	B320A180	-	-	-	-	-	
1/4	1.6	0.08	14	15	15	11	11	11	•	•	•	•	•	•	•	•	•	• ⁽¹⁾	• ⁽²⁾	•	• ⁽¹⁾	-	•	•	-	-	8320G182	-	-	-	-	-	
1/4	2.4	0.1	10	10	10	8	8	8	•	•	•	•	-	-	-	-	-	-	-	-	-	-	-	-	-	-	-	8320G184	-	MO	MS	-	-
1/4	3.2	0.21	6	6	6	4	4	4	•	-	-	-	•	•	-	-	-	-	-	-	-	-	-	-	-	-	-	B320A186	-	MO	-	-	-
1/4	3.2	0.21	6	6	6	4	4	4	•	•	•	•	-	-	-	-	-	-	-	-	-	-	-	-	-	-	8320G186	-	-	-	-	-	
1/4	4.4	0.3	3	3	3	2	2	2	-	-	•	•	-	-	-	-	-	-	-	-	-	-	-	-	-	-	8320G188	-	-	-	-	-	
1/4	2.4	0.1	10	10	10	8	8	8	-	-	-	-	•	•	-	-	-	-	-	-	-	-	-	-	-	-	-	B320A202 ⁽⁴⁾	MO	MS	-	-	-
1/4	2.4	0.1	10	10	10	8	8	8	•	•	•	•	-	-	-	-	-	-	-	-	-	-	-	-	-	-	8320G202	-	-	-	-	-	
1/4	3.2	0.21	6	6	6	4	4	4	-	-	-	-	•	•	-	-	-	-	-	-	-	-	-	-	-	-	B320A203	-	-	-	-	-	
1/4	3.2	0.21	6	6	6	4	4	4	-	-	•	•	-	-	-	-	-	-	-	-	-	-	-	-	-	-	8320G203	-	-	-	-	-	
NO - Normally open																																	
1/4	1.6	0.08	16	17	17	11	11	11	-	-	•	•	-	-	-	-	-	-	-	-	-	-	-	-	-	-	-	8320G192	-	-	-	-	-
1/4	2.4	0.1	10	10	10	7	7	7	•	-	-	-	•	•	-	-	-	-	-	-	-	-	-	-	-	-	-	B320A194	-	-	MS	-	-
1/4	2.4	0.1	10	10	10	7	7	7	-	•	•	•	-	-	-	-	-	-	-	-	-	-	-	-	-	-	-	8320G194	-	-	-	-	-
1/4	3.2	0.21	5	5	5	4	4	4	-	-	-	-	•	•	-	-	-	-	-	-	-	-	-	-	-	-	-	B320A196	-	MO	-	-	-
1/4	3.2	0.21	5	5	5	4	4	4	-	-	•	•	-	-	-	-	-	-	-	-	-	-	-	-	-	-	8320G196	-	-	-	-	-	
1/4	4.4	0.3	3	3	3	2	2	2	-	-	•	•	-	-	-	-	-	-	-	-	-	-	-	-	-	-	8320G198	-	-	-	-	-	
1/4	2.4	0.1	10	10	10	7	7	7	-	-	-	-	-	-	-	-	-	-	-	-	-	-	-	-	-	-	-	B320A204	-	-	-	-	-
1/4	3.2	0.21	5	5	5	4	4	4	-	-	-	-	•	•	-	-	-	-	-	-	-	-	-	-	-	-	-	B320A205	-	-	-	-	-

- Available Express
- (1) DC only
- (2) AC only
- (3) Please refer to the page 69 for VCEF&VCEV installation
- (4) TPL 16137 also available

Asia Pacific Express Catalog-Rev1.0(1/1/2017)

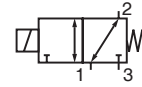




SOLENOID VALVES

direct operated, reduce & low power
brass or stainless steel bodies
1/4" - 1/2"

U



3/2
Series
327

FEATURES

- The valves are certified according to IEC 61508 functional safety data and have SIL-3 capability (TÜV & Exida certification)
- The solenoid valves are recommended for pilot applications with basic flow, wide pressure ranges and no minimum operating pressure
- PTFE rider rings and graphite-filled PTFE seals reduce friction and eliminate sticking
- Coils used in metal enclosures have class H insulation materials
- Option available for low ambient temperatures
- Peak voltage suppression diodes are standard in DC solenoids with metal enclosures
- The solenoid valves satisfy all relevant EC Directives
- Manual operators are optional including an under pressure removable type
- Environmental NACE compliant and certified vibration resistant in combination with WSCR solenoids



STANDARD VOLTAGES

DC (=) :	24V
AC (~) : VC, EF/VCEF, Redhat II	115-120V/50-60Hz; 230-240V/50-60Hz
SC, NF/WSNF, WSCR, WP/WS	115V/50-60Hz; 230V/50-60Hz

SPECIFICATIONS

Pipe Size	Orifice Size (mm)	Flow Coefficient Kv		Operating Pressure Differential (bar)		Power Level	Prefix											No Prefix	Catalog Number		Suffix
		(m³/h)	(l/m)	Min.	Max. (PS)		SC	VC	EF/VCEF ⁽²⁾	EV/VCEV ⁽²⁾	NF/WSNF ⁽⁶⁾	NFET/WSNFET	WSNFTIS	WSCR	HT	WP/WS	Brass		Stainless Steel		
		0	10	~/=	~/=																
U - Universal, FPM sealings and poppets (minimum fluid temperature -20°C)																					
1/4	5.7	0.45	7.5	0	10	BP	•	-	-	-	•	•	-	-	-	•	-	8327B001 ⁽⁴⁾⁽⁵⁾	8327B002 ⁽⁴⁾⁽⁵⁾	MO/MS	
1/4	5.7	0.45	7.5	0	10	MP	•	-	-	-	•	•	-	-	-	•	-	8327B201	8327B202	MO/MS	
1/4	5.7	0.45	7.5	0	10	RP	•	-	-	-	•	•	-	-	-	•	-	8327B101	8327B102 ⁽⁴⁾⁽⁵⁾	MO/MS	
1/4	5.7	0.45	7.5	0	10	RP	-	-	•	-	-	-	-	-	-	-	-	8327H101	8327H102	-	
1/4	5.7	0.45	7.5	0	10	LP	-	-	-	-	•	•	•	•	-	-	-	8327B301 ⁽¹⁾	8327B302 ⁽¹⁾⁽⁴⁾	MO/MS	
U - Universal, VMQ sealings and poppets (minimum fluid temperature -40°C)																					
1/4	5.7	0.45	7.5	0	10	BP	-	-	-	-	•	•	-	-	-	•	-	8327B011	8327B012	-	
U - Universal, (F)VMQ sealings and poppets (minimum fluid temperature -50°C)																					
1/4	5.7	0.45	7.5	0	10	MP	•	-	-	-	•	•	-	-	-	•	-	8327B211	8327B212	-	
1/4	5.7	0.45	7.5	0	10	RP	•	-	-	-	•	•	-	-	-	•	-	8327B111	8327B112	-	
1/4	5.7	0.45	7.5	0	10	LP	-	-	-	-	•	•	•	-	-	•	-	8327B311 ⁽¹⁾	8327B312 ⁽¹⁾	-	
U - Universal, FPM sealings and poppets (minimum fluid temperature -20°C)																					
1/4	6	0.42	7	-	10	BP	•	•	•	•	-	-	-	-	• ⁽¹⁾	-	•	8327G041	-	-	
1/4	6	0.42	7	-	10	BP	•	•	•	•	-	-	-	-	• ⁽¹⁾	-	•	-	8327G042	-	
U - Universal, FPM sealings and poppets (minimum fluid temperature -40°C)																					
1/4	6	0.42	7	-	10	BP	-	• ⁽¹⁾	•	•	-	-	-	-	-	-	-	-	8327G052	-	
U - Universal, NBR sealings and poppets (High Flow)																					
1/4	12	1.5	25	0	10	BP	•	-	-	-	•	•	-	-	-	•	-	8327A647	8327A648	MO	
1/2	12	1.5	25	0	10	BP	-	-	-	-	•	•	-	-	-	•	-	8327A607	8327A608 ⁽⁹⁾	MO/MS	
U - Universal, (F)VMQ sealings and poppets (High Flow)																					
1/4	12	1.5	25	0	10	BP	-	-	-	-	•	•	-	-	-	-	-	-	8327A646	-	
1/2	12	1.5	25	0	10	BP	-	-	-	-	•	•	-	-	-	-	-	-	8327A606	-	

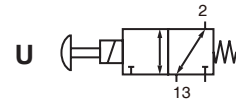
- Available Express
- (1) DC only
- (2) Please refer to the page 69 for VCEF&VCEV installation
- (3) TPL 16137 also available
- (4) TPL 18528 also available
- (5) TPL 18538 also available
- (6) TPL 26104 also available for prefix NF/WSNF
- ❖ Select 8 for NPT ANSI 1.20.3 or select G for ISO G (228/1)





SOLENOID VALVES

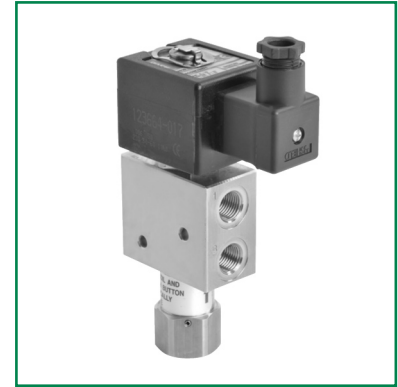
no voltage release (tamperproof)
manual reset construction
1/4"



3/2
Series
327

FEATURES

- The valves are certified according to IEC 61508 functional safety data and have SIL-3 capability (Exida approval)
- Compact tamperproof/manual reset function which means that the valve has to be energized as well as manually operated before it stays in the "latched" position. Because of the tamperproof feature there will be no flow from port 3 to port 2 if only the push button is pressed. The No Voltage Release (NVR) function will make sure that the valve trips when de-energized
- The solenoid valves are recommended for pilot applications with basic flow, wide pressure ranges and no minimum operating pressure
- PTFE rider rings and graphite-filled PTFE seals reduce friction and eliminate sticking
- Coils used in metal enclosures have class H insulation materials
- Peak voltage suppression diodes are standard in DC solenoids with metal enclosures
- The solenoid valves satisfy all relevant EC Directives



STANDARD VOLTAGES

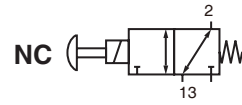
DC (=) : 24V
AC (-) : EF/VCEF, Redhat II 115-120V/50-60Hz; 230-240V/50-60Hz
NF/WSNF, WP/WS 115V/50-60Hz; 230V/50-60Hz

SPECIFICATIONS

Pipe Size	Orifice Size	Flow Coefficient Kv		Operating Pressure Differential (bar)		Power Level	Prefix				Catalog Number	
				Min.	Max. (PS)		EF/VCEF	NF/WSNF ⁽²⁾	NFET/WSNFET	WP	Brass	Stainless Steel
					Air/Water							
(mm)	(m ³ /h)	(l/m)			~/=							
U - Universal, FPM sealings and poppets, manual reset												
1/4	5.7	0.55	9.2	0	10	BP	•	•	•	•	8327B021 ⁽¹⁾	8327B022 ⁽¹⁾
1/4	5.7	0.55	9.2	0	10	MP	-	•	•	•	8327B221	8327B222
1/4	5.7	0.55	9.2	0	10	RP	-	•	•	•	8327B121	8327B122
1/4	5.7	0.55	9.2	0	10	RP	•	-	-	-	8327H121	8327H122
1/2	12	1.8	30	0	10	MP	-	•	•	-	-	8327A620
U - Universal, FPM sealings and poppets, manual reset tamperproof												
1/4	5.7	0.55	9.2	0	10	BP	•	•	•	-	-	8327B032
1/4	5.7	0.55	9.2	0	10	MP	-	•	•	-	-	8327B232
1/4	5.7	0.55	9.2	0	10	RP	-	•	•	-	8327B131	8327B132
1/4	5.7	0.55	9.2	0	10	RP	•	-	-	-	8327H131	8327H132

• Available Express
(1) TPL 18528 also available
(2) TPL 26104 also available for prefix NF/WSNF





FEATURES

- The valves are certified according to IEC 61508 functional safety data and have SIL-3 capability (Exida approval)
- Compact tamperproof/manual reset function which means that the valve has to be energized as well as manually operated before it stays in the "latched" position. Because of the tamperproof feature there will be no flow from port 3 to port 2 if only the push button is pressed. The No Voltage Release (NVR) function will make sure that the valve trips when de-energized
- The solenoid valves are recommended for pilot applications with basic flow, wide pressure ranges and no minimum operating pressure
- PTFE rider rings and graphite-filled PTFE seals reduce friction and eliminate sticking
- Coils used in metal enclosures have class H insulation materials
- Peak voltage suppression diodes are standard in DC solenoids with metal enclosures
- The solenoid valves satisfy all relevant EC Directives



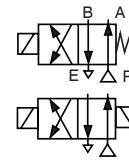
STANDARD VOLTAGES

DC (=) : 24V
 AC (-) : NF/WSNF, WSCR, WP/WS 115V/50-60Hz; 230V/50-60Hz

SPECIFICATIONS

Pipe Size	Orifice Size	Flow Coefficient Kv		Operating Pressure Differential (bar)		Power Level	Prefix			Catalog Number	Suffix
				Min.	Max. (PS)						
					Air/Water						
(mm)	(m ³ /h)	(l/m)		~/=	~/=	NF/WSNF	NFET/WSNFET	WP	Stainless Steel		
NC - Normally closed, FPM sealings and poppets (minimum fluid temperature -20°C)											
1/4	5.7	0.45	7.5	0	10	BP	•	•	•	8327B005	MO/MS
1/4	5.7	0.45	7.5	0	10	RP	•	•	•	8327B105	MS
1/4	5.7	0.45	7.5	0	10	LP	•	•	•	8327B305 ⁽¹⁾	MS

• Available Express
 (1) DC only



FEATURES

- Direct acting operation and high flow construction
- Direct acting, high flow slide-style valve
- Optional flow control regulates cylinder speed independently, in either direction
- Mechanical detent on dual solenoids holds last position, even after loss of electric power, pneumatics or pressure
- No minimum operating pressure differential required to shift valve
- Dual solenoid operation: solenoid may be energized momentarily (1/10 second) or continuously
- Mountable in any position



STANDARD VOLTAGES

AC (-) : 110V/50Hz; 120V/50Hz; 220V/50Hz; 240V/50Hz

SPECIFICATIONS

Pipe Size (in)	Orifice Size (mm)	Kv Flow Factor (m ³ /h)	Operating Pressure Differential (bar)			Max. Fluid Temp. °C	Prefix			No Prefix	Catalog Number	Suffix
			Max. AC				AC	EF/VCEF ⁽¹⁾	HB			
			Air-Inert Gas	Water	Lt. Oil @ 300 SSU						Brass	
Single solenoid construction												
1/4	4.8	0.6	9	7	7	71	-	-	•	-	B342C001	-
1/4	4.8	0.6	9	7	7	71	•	•	-	•	8342G001	-

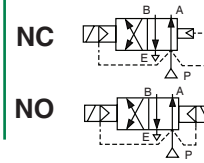
• Available Express

(1) Please refer to the page 69 for VCEF installation



SOLENOID VALVES

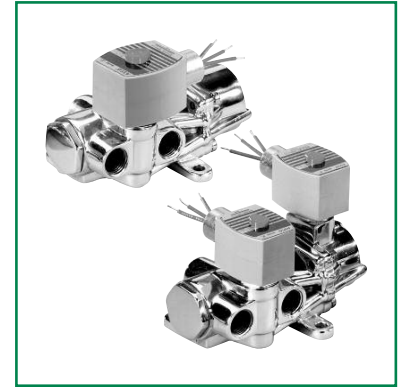
piston / poppet
brass body
1/2"



4/2
Series
344

FEATURES

- Sturdy, robust construction
- Piston-operated poppet design provides high flow
- For use with air or water
- Wide range of sizes and flow rates
- Single or dual solenoid constructions
- Dual solenoid can be shifted with a momentary signal and remain in position even if electrical power is lost
- Mountable in any position



STANDARD VOLTAGES

DC (=) : 24V; 125V(HC)
AC (-) : VC, EF/VCEF, Redhat II 110V/50Hz-120V/60Hz; 220V/50Hz-240V/60Hz
SC, NF/WSNF, WP/WS 115V/50Hz; 120V/60Hz; 230V/50Hz

SPECIFICATIONS

Pipe Size (in)	Orifice Size (mm)	Kv Flow Factor (m ³ /h)		Operating Pressure Differential (bar)						Max. Fluid Temp. °C		Prefix													No Prefix	Catalog Number		Suffix	
				Max. AC			Max. DC					AC	DC	SC	VC	EF/VCEF ⁽¹⁾	NF/WSNF	NFET/WSNFET	JKF/JKH	HC	HT	WP	WS	WSTIS		Brass	Stainless Steel		
				Min.	Press.	Exh.	Air-Inert Gas	Water	Light Oil @ 300 SSU																				Air-Inert Gas
Single solenoid																													
1/4	6	0.69	0.86	0.7	10	9	9	9	9	9	82	65	-	-	•	-	-	•	•	•	•	-	-	•	8344G070	-	MO	-	
1/4	6.4	0.7	11.6	0.7	9	9	9	9	9	9	82	49	-	-	-	•	•	-	-	•	•	•	-	-	-	-	8344A090	-	-
3/8	10	1.2	1.89	0.7	10	9	9	9	9	9	82	65	•	-	-	•	•	-	-	•	•	-	-	-	B344A072	-	MO	-	
1/2	10	1.2	1.89	0.7	10	9	9	9	9	9	82	65	•	-	-	•	•	-	-	•	•	-	•	-	B344A074	-	-	-	
1/2	10	1.2	1.89	0.7	10	9	9	9	9	9	82	65	-	•	•	-	-	•	•	•	-	-	-	•	8344G074	-	MO	-	
1/2	9.5	1.9	31.6	0.7	9	9	9	9	9	9	82	49	-	-	-	•	•	-	-	•	•	-	-	-	-	-	8344A095	-	V
3/4	19	4.5	4.8	0.7	10	9	9	9	9	9	82	65	•	-	-	•	•	-	-	•	•	-	-	-	•	344BA076	-	MO	-
Dual solenoid																													
1/4	6.4	0.7	11.6	0.7	17	9	-	9	9	-	82	49	•	-	-	-	-	-	•	•	•	-	-	-	8344-044	-	MO	-	
3/8	9.5	1.9	31.6	0.7	17	14	-	9	9	-	82	49	•	-	-	-	-	-	•	•	•	-	-	-	8344-080	-	MO	-	
1/2	10	1.4	1.89	0.7	17	14	9	9	9	7	82	49	-	-	•	-	-	-	•	•	-	-	-	-	8344G082	-	MO	-	
3/4	19	5.2	4.8	0.7	21	21	14	9	9	7	82	49	•	-	-	•	•	-	-	-	-	-	-	-	•	344B054	-	MO	-
1	19	5.2	4.8	0.7	21	21	14	9	9	7	82	49	-	-	-	•	•	-	-	-	-	-	-	-	•	344B056	-	MO	-

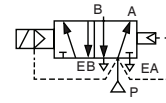
- Available Express
- (1) Please refer to the page 69 for VCEF installation





SOLENOID VALVES

general service
brass body
1/4"



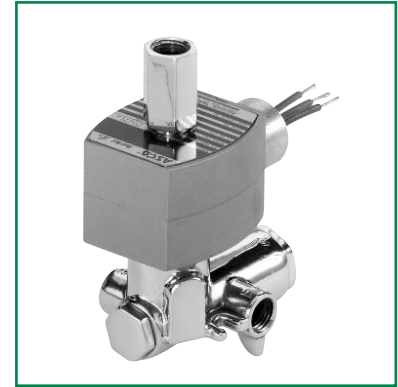
4/2
Series
345

FEATURES

- Compact valves for general service applications
- Low-cost, 4-way valve when low flow is sufficient
- Mountable in any position

STANDARD VOLTAGES

DC (=) : 24V
AC (-) : EF/VCEF, Redhat II 110V/50Hz-120V/60Hz; 220V/50Hz-240V/60Hz



SPECIFICATIONS

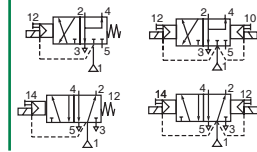
Pipe Size (in)	Orifice Size (mm)		Kv Flow Factor (m ³ /h)		Operating Pressure Differential (bar)						Max. Fluid Temp. °C		Prefix		No Prefix	Catalog Number	
					Min.	Max. AC			Max. DC								
						Press.	Exh.	Inlet	Exh.	Air-Inert Gas	Water	Lt. Oil @ 50 SSU	Air-Inert Gas	Water	Lt. Oil @ 50 SSU	AC	DC
Single solenoid																	
1/4	2	2	0.08	0.08	0.7	10	10	10	7	7	7	82	40	•	•	•	8345G001
Single solenoid air-only construction - Exhaust to atmosphere																	
1/4	2	2	0.08	0.08	0.7	10	-	-	7	-	-	82	40	•	-	•	8345H003

- Available Express
- (1) Please refer to the page 69 for VCEF installation



SOLENOID VALVES

Spool type
single/dual solenoid
aluminium body, 1/4", Namur and Threaded style



3/2
5/2
Series
531

FEATURES

- The "Namur" style spool valve have threaded port connection and Namur interface, and "Threaded" style spool valve have threaded port connections
- All the exhaust ports of this spool valve are connectable, providing better environmental protection, particularly recommended for sensitive areas such as clean rooms, and applications in the pharmaceutical and food processing sectors
- The valve offers environmental protection against the ingress of liquids, dusts or any other foreign matter (environmentally-protected construction)
- Can be externally piloted (external air pilot supply) to convert valve to zero minimum operation by flipping a gasket
- Stainless steel manual operator as standard



STANDARD VOLTAGES

DC (=) :	24V
AC (-) : SC, VC, EF/VCEF, EV/VCEV, Redhat II	110V/50Hz-120V/60Hz; 220V/50Hz-240V/60Hz
NF/WSNF	115V/50Hz; 120V/60Hz; 230V/50Hz
WBLP	115V/50Hz; 230V/50Hz

SPECIFICATIONS

Pipe Size	Orifice Size (mm)	Flow Coefficient Kv (m ³ /h) (l/min)		Operating Pressure Differential (bar)			Prefix										No Prefix	Catalog Number
				Min.	Max. (PS)		SC	VC	WBLP	EF/VCEF ⁽¹⁾	JKF/JKH	NF	NFET	JPIS	HT	WP		
					~	=												
NAMUR 3/2 NC - 5/2 - Solenoid air pilot operated - spring return (Single solenoid)																		
1/4	6	0.95	15.5	2	10	10	•	-	•	-	-	-	-	-	-	-	♣531C001MS	
1/4	6	0.95	15.5	2	10	10	-	-	-	-	-	-	•	-	•	-	8531B301MO ⁽²⁾	
1/4	6	0.95	15.5	2	10	10	-	•	-	•	-	-	-	-	-	•	8531G301MO ⁽²⁾	
1/4	6	0.95	15.5	2	10	10	-	•	-	•	-	-	-	-	-	•	G531H301MO ⁽²⁾	
1/4	6	0.95	15.5	2	10	10	-	•	-	•	-	•	•	-	•	•	8531B401MO	
1/4	6	0.95	15.5	2	10	10	-	•	-	•	-	-	-	-	•	•	8531G401MO	
1/4	6	0.95	15.5	2	10	10	-	•	-	•	-	-	-	-	•	-	G531H401MO	
NAMUR 3/2 NC - 5/2 - Solenoid air pilot operated - spring return (Double solenoid)																		
1/4	6	0.95	15.5	2	10	10	•	-	•	-	-	-	-	-	-	-	♣531C002MS	
THREADED 5/2 - Solenoid air pilot operated - spring return (Single solenoid)																		
1/4	6	0.95	15.5	2	10	10	•	-	•	-	-	-	-	-	-	-	♣531C017MS	
1/4	6	0.95	15.5	2	10	10	-	-	-	•	-	-	-	-	-	•	G531H317MO ⁽²⁾	
1/4	6	0.95	15.5	2	10	10	-	-	-	-	•	•	-	•	•	-	8531B417MO	
1/4	6	0.95	15.5	2	10	10	-	•	-	•	•	-	-	•	-	•	G531H417MO	
THREADED 5/2 - Solenoid air pilot operated and return (Double solenoid)																		
1/4	6	0.95	15.5	2	10	10	•	-	•	-	-	-	-	-	-	-	♣531C018MS	
1/4	6	0.95	15.5	2	10	10	-	•	-	•	-	-	-	-	-	•	G531H318MO ⁽²⁾	

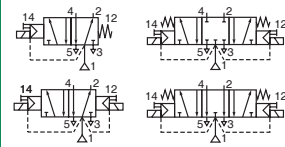
- Available Express
- (1) Please refer to the page 69 for VCEF installation
- (2) DC only
- ♣ Stands for options "8" for NPT port thread and "G" for BSP port thread





SPOOL VALVES

aluminium, stainless steel or brass body
1/4" threaded and NAMUR



3/2
5/2
Series
551

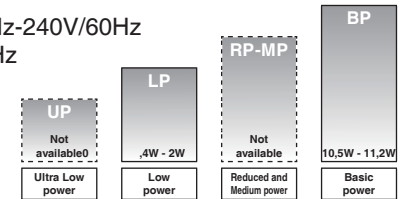
FEATURES

- The monostable spool valves in conformity with IEC 61508 Standard (2010 route 2H version) have TÜV and EXIDA certified with integrity levels: SIL 2 for HFT = 0 / SIL 3 for HFT = 1
- All the exhaust ports of this spool valve are connectable, providing better environmental protection, particularly recommended for sensitive areas such as clean rooms, and applications in the pharmaceutical and food processing sectors
- The valve offers environmental protection against the ingress of liquids, dusts or any other foreign matter (environmentally-protected construction)
- The solenoid valves satisfy all relevant EC Directives



STANDARD VOLTAGES

DC (=) : 24V; 125V(HC)
AC (-) : SC, VC, EF/VCEF, EV/VCEV, Redhat II 110V/50Hz-120V/60Hz; 220V/50Hz-240V/60Hz
NF/WSNF 115V/50Hz; 120V/60Hz; 230V/50Hz
WBLP 115V/50Hz; 230V/50Hz



POWER LEVELS - cold electrical holding values (watt)

SPECIFICATIONS

Pipe Size	Orifice Size	Flow Coefficient Kv		Operating Pressure Differential (bar)		Prefix														No Prefix	Catalog Number			Options													
						Min. (1)	Max. (PS)	Air	SC	VC	PV	WBLP	EF/VCEF(2)(3)	EV/VCEV(3)	NF/WSNF	NFET/WSNFET	JPIS/JSIS(5)	JKF	JKH		HT	HC	Stainless Steel		Aluminium	Brass											
																											~	=									
THREADED 3/2 - Solenoid air pilot operated - spring return (monostable)																																					
1/4	6	0.75	12.5	2	10	10	•	-	•(4)	•	-	-	-	-	-	-	-	-	-	-	-	-	-	-	-	-	-	-	-	-	-	-	-	-	•551A005	-	MS
1/4	6	0.75	12.5	0/2	10	10	-	-	-	-	-	-	-	-	-	-	-	-	-	-	-	-	-	-	-	-	-	-	-	-	-	-	-	•551B405	-	MO	
1/4	6	0.75	12.5	2	10	8.2	-	•	-	-	-	-	-	-	-	-	-	-	-	-	-	-	-	-	-	-	-	-	-	-	-	-	8551G405	-	MO		
1/4	6	0.75	12.5	0/2	10	10	•	•	-	-	-	-	-	-	-	-	-	-	-	-	-	-	-	-	-	-	-	-	-	-	-	-	G551H405	-	MO		
1/4	6	0.75	12.5	0/2	-	10	•	-	-	-	-	-	-	-	-	-	-	-	-	-	-	-	-	-	-	-	-	-	-	-	-	-	•551B305(6)	-	MO		
1/4	6	0.75	12.5	0/2	-	10	-	•	-	-	-	-	-	-	-	-	-	-	-	-	-	-	-	-	-	-	-	-	-	-	-	-	8551G305(6)	-	MO		
1/4	6	0.7	11.7	0/3	-	10	-	•	-	-	-	-	-	-	-	-	-	-	-	-	-	-	-	-	-	-	-	-	-	-	-	-	G551H305(6)	-	MO		
1/4	6	0.75	12.5	0/2	-	10	•	-	-	-	-	-	-	-	-	-	-	-	-	-	-	-	-	-	-	-	-	-	-	-	-	-	•551A313(6)	-	MO		
1/4	6	0.75	12.5	0/2	-	10	-	-	-	-	-	-	-	-	-	-	-	-	-	-	-	-	-	-	-	-	-	-	-	-	-	-	8551B313(6)	-	MO		
1/4	6	0.75	12.5	0/2	-	10	-	•	-	-	-	-	-	-	-	-	-	-	-	-	-	-	-	-	-	-	-	-	-	-	-	-	8551G313(6)	-	MO		
1/4	6	0.75	12.5	0/2	10	10	-	-	-	-	-	-	-	-	-	-	-	-	-	-	-	-	-	-	-	-	-	-	-	-	-	-	8551A413	-	MO		
1/4	6	0.75	12.5	0/2	10	10	-	•	-	-	-	-	-	-	-	-	-	-	-	-	-	-	-	-	-	-	-	-	-	-	-	-	8551D413	-	MO		
1/4	6	0.75	12.5	0/2	10	10	•	•	-	-	-	-	-	-	-	-	-	-	-	-	-	-	-	-	-	-	-	-	-	-	-	-	•551G413	-	MO		
THREADED 3/2 - Solenoid air pilot operated - spring return (bistable)																																					
1/4	6	0.75	12.5	0/2	10	10	-	-	-	-	-	-	-	-	-	-	-	-	-	-	-	-	-	-	-	-	-	-	-	-	-	-	-	8551B314(6)	-	-	
THREADED 5/2 - Solenoid air pilot operated - spring return (monostable)																																					
1/4	6	0.75	12.5	2	10	10	•	-	•(4)	•	-	-	-	-	-	-	-	-	-	-	-	-	-	-	-	-	-	-	-	-	-	-	-	•551A017	-	MS	
1/4	6	0.75	12.5	0/2	10	10	-	-	-	-	-	-	-	-	-	-	-	-	-	-	-	-	-	-	-	-	-	-	-	-	-	-	-	•551A421	-	MO	
1/4	6	0.75	12.5	0/2	10	10	-	•	-	-	-	-	-	-	-	-	-	-	-	-	-	-	-	-	-	-	-	-	-	-	-	-	-	8551D421	-	MO	
1/4	6	0.75	12.5	0/2	10	10	•	•	-	-	-	-	-	-	-	-	-	-	-	-	-	-	-	-	-	-	-	-	-	-	-	-	-	•551G421	-	MO	
1/4	6	0.75	12.5	0/2	10	10	-	-	-	-	-	-	-	-	-	-	-	-	-	-	-	-	-	-	-	-	-	-	-	-	-	-	-	•551B417	-	MO	
1/4	6	0.75	12.5	0/2	10	10	-	•	-	-	-	-	-	-	-	-	-	-	-	-	-	-	-	-	-	-	-	-	-	-	-	-	-	G551D417	-	MO	
1/4	6	0.75	12.5	2	10	8.2	•	•	-	-	-	-	-	-	-	-	-	-	-	-	-	-	-	-	-	-	-	-	-	-	-	-	-	8551G417	-	MO	
1/4	6	0.75	12.5	0/2	10	10	•	•	-	-	-	-	-	-	-	-	-	-	-	-	-	-	-	-	-	-	-	-	-	-	-	-	-	G551H417	-	MO	
1/4	6	0.75	12.5	0/2	-	10	•	-	-	-	-	-	-	-	-	-	-	-	-	-	-	-	-	-	-	-	-	-	-	-	-	-	-	8551A319(8)	MO		
1/4	6	0.74	12.5	2.4	-	9	-	-	-	-	-	-	-	-	-	-	-	-	-	-	-	-	-	-	-	-	-	-	-	-	-	-	8551B319(8)	-			
1/4	6	0.75	12.5	0/2	-	10	•	•	-	-	-	-	-	-	-	-	-	-	-	-	-	-	-	-	-	-	-	-	-	-	-	-	•551G319(8)	MO			
1/4	6	0.75	12.5	0/2	10	10	-	•	-	-	-	-	-	-	-	-	-	-	-	-	-	-	-	-	-	-	-	-	-	-	-	-	-	G551D419	MO		
1/4	6	0.75	12.5	0/2	10	10	•	•	-	-	-	-	-	-	-	-	-	-	-	-	-	-	-	-	-	-	-	-	-	-	-	-	•551G419	MO			
1/4	6	0.75	12.5	0/2	-	10	•	-	-	-	-	-	-	-	-	-	-	-	-	-	-	-	-	-	-	-	-	-	-	-	-	-	-	•551A321(6)	-	MO	
1/4	6	0.75	12.5	0/2	-	10	-	-	-	-	-	-	-	-	-	-	-	-	-	-	-	-	-	-	-	-	-	-	-	-	-	-	-	8551B321(6)	-	MO	
1/4	6	0.75	12.5	0/2	-	10	-	•	-	-	-	-	-	-	-	-	-	-	-	-	-	-	-	-	-	-	-	-	-	-	-	-	-	•551G321(6)	-	MO	
1/4	6	0.75	12.5	0/2	-	10	•	-	-	-	-	-	-	-	-	-	-	-	-	-	-	-	-	-	-	-	-	-	-	-	-	-	-	•551B317(6)	-	MO	
1/4	6	0.75	12.5	2	-	10	-	•	-	-	-	-	-	-	-	-	-	-	-	-	-	-	-	-	-	-	-	-	-	-	-	-	-	8551G317(6)	-	MO	
1/4	6	0.75	12.5	0/3	-	10	-	•	-	-	-	-	-	-	-	-	-	-	-	-	-	-	-	-	-	-	-	-	-	-	-	-	-	G551H317(6)	-	MO	



SPECIFICATIONS

Pipe Size	Orifice Size	Flow Coefficient Kv		Operating Pressure Differential (bar)		Prefix														No Prefix	Catalog Number			Options					
						Min. ⁽¹⁾		Max. (PS)		SC	VC	PV	WBLP	EF/VCEF ⁽²⁾⁽³⁾	EV/VCEV ⁽⁶⁾	NF/WSNF	NFET/WSNFET	JPIS/JSIS ⁽⁵⁾	JKF/JKH		HT	HC	Stainless Steel		Aluminium	Brass			
						~	=	~	=																				
THREADED 5/2 - Solenoid air pilot operated and return (Double solenoid)																													
1/4	6	0.75	12.5	2	10	10	•	-	• ⁽⁴⁾	•	-	-	-	-	-	-	-	-	-	-	-	-	-	-	•551A018	-	MS		
1/4	6	0.75	12.5	0/2	10	10	-	-	-	-	-	-	•	•	-	-	-	-	-	-	-	-	-	•551A422	-	-	MO		
1/4	6	0.75	12.5	0/2	10	10	•	•	-	-	•	•	-	-	-	-	-	•	•	•	•	-	-	•551G422	-	-	MO		
1/4	6	0.75	12.5	0/2	10	10	-	-	-	-	-	-	-	-	-	-	-	-	-	-	-	-	-	-	•551B418	-	MO		
1/4	6	0.75	12.5	0/2	10	10	•	•	-	-	•	-	-	-	-	-	-	•	•	•	•	-	-	-	8551G418	-	MO		
1/4	6	0.75	12.5	0/4	10	10	•	•	-	-	•	-	-	-	-	-	-	•	•	•	•	-	-	-	G551H418	-	MO		
1/4	6	0.75	12.5	0/2	-	10	-	-	-	-	-	-	-	-	-	-	-	-	-	-	-	-	-	•551A322 ⁽⁶⁾	-	-	MO		
1/4	6	0.75	12.5	0/2	-	10	-	-	-	-	-	-	-	-	-	-	-	-	-	-	-	-	-	8551B322 ⁽⁶⁾	-	-	MO		
1/4	6	0.75	12.5	0/2	-	10	-	-	-	-	-	-	-	-	-	-	-	-	-	-	-	-	-	•551G322 ⁽⁶⁾	-	-	MO		
1/4	6	0.75	12.5	0/2	-	10	-	-	-	-	-	-	-	-	-	-	-	-	-	-	-	-	-	-	•551B318 ⁽⁶⁾	-	MO		
1/4	6	0.75	12.5	0/2	-	10	-	-	-	-	-	-	-	-	-	-	-	-	-	-	-	-	-	-	8551G318 ⁽⁶⁾	-	MO		
1/4	6	0.75	12.5	0/3	-	10	-	-	-	-	-	-	-	-	-	-	-	-	-	-	-	-	-	-	G551H318 ⁽⁶⁾	-	-		
1/4	6	0.75	12.5	0/3	-	10	•	-	•	-	-	-	-	-	-	-	-	-	-	-	-	-	-	-	-	•551A320 ⁽⁶⁾	MO		
1/4	6	0.75	12.5	0/3	-	10	-	-	-	-	-	-	-	-	-	-	-	-	-	-	-	-	-	-	-	8551B320 ⁽⁶⁾	-		
1/4	6	0.75	12.5	0/2	-	10	•	•	-	-	•	-	-	-	-	-	-	-	-	-	-	-	-	-	-	•551G320 ⁽⁶⁾	MO		
1/4	6	0.75	12.5	0/2	10	10	•	•	-	-	•	-	-	-	-	-	-	-	-	-	-	-	-	-	-	•551G420	MO		
NAMUR 3/2 NC - 5/2 - Solenoid air pilot operated - spring return (Single solenoid)																													
1/4	6	0.6	10	2	10	10	•	-	• ⁽⁴⁾	•	-	-	-	-	-	-	-	-	-	-	-	-	-	-	-	•551A001	-	MS	
1/4	6	0.6	10	0/2	10	10	-	-	-	-	-	-	-	•	•	-	-	-	-	-	-	-	-	-	-	•551B401	-	MO	
1/4	6	0.7	11.7	2	10	10	•	•	-	-	•	-	-	-	-	-	-	-	-	-	-	-	-	-	-	8551G401	-	MO	
1/4	6	0.6	10	0/2	10	10	-	-	•	-	-	-	-	-	-	-	-	-	-	-	-	-	-	-	-	•551D401	-	MO	
1/4	6	0.6	10	0/2	10	10	•	•	-	-	•	-	-	-	-	-	-	-	-	-	-	-	-	-	-	G551H401	-	MO	
1/4	6	0.6	10	0/2	10	10	-	-	-	-	-	-	-	-	-	-	-	-	-	-	-	-	-	-	-	-	G551D403	MO	
1/4	6	0.6	10	0/2	10	10	•	•	-	-	•	•	-	-	-	-	-	-	-	-	-	-	-	-	-	•551G403	MO		
1/4	6	0.6	10	0/2	10	10	-	-	-	-	-	-	-	•	•	-	-	-	-	-	-	-	-	-	-	-	-	MO	
1/4	6	0.6	10	0/2	10	10	-	-	-	-	-	-	-	-	-	-	-	-	-	-	-	-	-	-	•551A409	-	MO		
1/4	6	0.6	10	0/2	10	10	-	-	•	-	-	-	-	-	-	-	-	-	-	-	-	-	-	-	•551D409	-	MO		
1/4	6	0.6	10	0/2	10	10	•	•	-	-	•	•	-	-	-	-	-	-	-	-	-	-	-	-	-	•551G409	-	MO	
1/4	6	0.7	11.7	0/2	-	10	•	-	•	-	-	-	-	-	-	-	-	-	-	-	-	-	-	-	-	•551B301 ⁽⁶⁾	-	MO	
1/4	6	0.7	11.7	0/2	-	10	-	-	-	-	•	-	-	-	-	-	-	-	-	-	-	-	-	-	-	8551G301 ⁽⁶⁾	-	MO	
1/4	6	0.7	11.7	0/3	-	10	-	-	-	-	•	-	-	-	-	-	-	-	-	-	-	-	-	-	-	G551H301 ⁽⁶⁾	-	MO	
1/4	6	0.6	10	0/2	-	10	•	-	-	-	-	-	-	•	•	-	-	-	-	-	-	-	-	-	-	-	•551A303 ⁽⁶⁾	MO	
1/4	6	0.6	10	0/2	-	10	-	-	-	-	-	-	-	-	-	-	-	-	-	-	-	-	-	-	-	8551B303 ⁽⁶⁾	MO		
1/4	6	0.7	10	2	-	10	•	•	-	-	•	-	-	-	-	-	-	-	-	-	-	-	-	-	-	•551G303 ⁽⁶⁾	MO		
1/4	6	0.6	10	0/2	-	10	•	-	•	-	-	-	-	•	•	-	-	-	-	-	-	-	-	-	-	-	•551A309 ⁽⁶⁾	-	MO
1/4	6	0.6	10	0/2	-	10	-	-	-	-	-	-	-	-	-	-	-	-	-	-	-	-	-	-	-	•551B309 ⁽⁶⁾	-	MO	
1/4	6	0.6	10	0/2	-	10	-	-	•	-	-	-	-	•	•	-	-	-	-	-	-	-	-	-	-	•551G309 ⁽⁶⁾	-	MO	
NAMUR 3/2 NC - 5/2 - Solenoid air pilot operated and return (Double Solenoid)																													
1/4	6	0.6	10	2	10	10	•	-	• ⁽⁴⁾	•	-	-	-	-	-	-	-	-	-	-	-	-	-	-	-	•551A002	-	MS	
1/4	6	0.6	10	0/2	10	10	-	-	-	-	-	-	-	-	-	-	-	-	-	-	-	-	-	-	-	•551B402	-	MO	
1/4	6.4	0.7	11.7	0/2	10	8.2	•	•	-	-	•	-	-	-	-	-	-	-	-	-	-	-	-	-	-	8551G402	-	MO	
1/4	6.4	0.7	11.7	0/2	10	8.2	•	•	-	-	•	-	-	-	-	-	-	-	-	-	-	-	-	-	-	G551H402	-	MO	
1/4	6	0.6	10	0/2	-	10	•	-	-	-	-	-	-	-	-	-	-	-	-	-	-	-	-	-	-	-	G551A304 ⁽⁶⁾	MO	
1/4	6	0.7	11.7	2	-	9	-	-	-	-	-	-	-	-	-	-	-	-	-	-	-	-	-	-	-	-	8551B304 ⁽⁶⁾	-	
1/4	6	0.6	10	0/2	-	10	•	•	-	-	•	-	-	-	-	-	-	-	-	-	-	-	-	-	-	-	•551G304 ⁽⁶⁾	-	
1/4	6	0.6	10	0/2	10	10	•	•	-	-	•	-	-	-	-	-	-	-	-	-	-	-	-	-	-	-	•551G404	MO	
1/4	6	0.6	10	0/2	10	10	-	-	-	-	-	-	-	-	-	-	-	-	-	-	-	-	-	-	-	-	-	MO	
1/4	6	0.6	10	0/2	10	10	-	-	-	-	-	-	-	-	-	-	-	-	-	-	-	-	-	-	-	•551A410	-	MO	
1/4	6	0.6	10	0/2	10	10	•	•	-	-	•	•	-	-	-	-	-	-	-	-	-	-	-	-	-	•551G410	-	MO	
1/4	6	0.6	10	0/2	-	10	•	-	•	-	-	-	-	-	-	-	-	-	-	-	-	-	-	-	-	-	•551B302 ⁽⁶⁾	-	MO
1/4	6	0.7	11.7	2	-	10	-	-	-	-	•	-	-	-	-	-	-	-	-	-	-	-	-	-	-	-	8551G302 ⁽⁶⁾	-	MO
1/4	6	0.6	10	0/2	-	10	-	-	-	-	•	-	-	-	-	-	-	-	-	-	-	-	-	-	-	-	G551H302 ⁽⁶⁾	-	MO
1/4	6	0.6	10	0/2	-	10	-	-	•	-	-	-	-	-	-	-	-	-	-	-	-	-	-	-	-	-	•551A310 ⁽⁶⁾	-	MO
1/4	6	0.6	10	0/2	-	10	-	-	-	-	-	-	-	-	-	-	-	-	-	-	-	-	-	-	-	•551B310 ⁽⁶⁾	-	MO	
1/4	6	0.6	10	0/2	-	10	-	-	-	-	•	-	-	-	-	-	-	-	-	-	-	-	-	-	-	-	•551G310 ⁽⁶⁾	-	MO

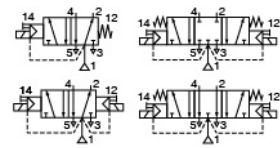
- Available Express
- (1) Zero minimum is only achieved if external pressure is applied
- (2) ATEX certified VCEF & VCEV come with TPL24062
- (3) Please refer to the page 69 for VCEF installation; EF/VCEF for aluminum body only, EF/VCEF with SS body replaced by EV/VCEV
- (4) TPL 20787 also available
- (5) For JPIS/JSIS 551 with single solenoid, operating pressure differential is 2.4 to 9 bar. For JPIS/JSIS 551 with double solenoids, operating pressure differential is 2 to 9 bar.
- (6) DC only
- Stands for options "8" for NPT port thread and "G" for BSP port thread

PREFIX TABLE

Prefix							Description	Power Level		
1	2	3	4	5	6	7		RP	MP	BP
E	F						Explosionproof - NEMA 7, 9 - Zinc plated steel conduit	-	-	•
V	C	E	F				Flameproof/Encapsulated - Aluminium NEPSI (GB3836)	•	-	•
V	C	E	V				Flameproof/Encapsulated - 316L SS NEPSI (GB3836)	•	-	•
P	V						Encapsulated epoxy moulded (EN/IEC 60079-18, 61241-18)*	-	-	•
S	C						Solenoid with spade plug connector (EN/IEC 60730)	-	-	•
N	F						Flameproof - Aluminium (EN/IEC 60079-1, 60079-31)*	-	-	•
W	S	N	F				Flameproof - 316L SS (EN/IEC 60079-1, 60079-31)*	-	-	•
W	B	L	P				I.S./encapsulation with PBT IP67 enclosure (EN/IEC 60079-7+18+21)	•	-	-
				H	T		Class H - High temperature, +80°C ambient temp.	-	-	•
J	P	I	S				Aluminum Junction Box with 1/2" NPT Conduit	-	-	-
J	S	I	S				316L SS Junction Box with 1/2" NPT Conduit	-	-	-
J	K	F					Class F High Temperature Spade or Screw Terminal Coils	-	-	-
J	K	H					Class H High Temperature Spade or Screw Terminal Coils	-	-	•
						X	Other special constructions	-	-	•

SUFFIX TABLE

Suffix							Description	Power Level		
1	2	3	4	5	6	7		RP	MP	BP
			M	O			Push type manual operator	-	-	•



FEATURES

- The monostable spool valves have TÜV-EXIDA certified IEC 61508 functional safety data and can be used up to SIL 4 (551/TÜV)-SIL 3 (552-553/EXIDA)
- All the exhaust ports of this spool valve are connectable, providing better environmental protection, particularly recommended for sensitive areas such as clean rooms, and applications in the pharmaceutical and food processing sectors
- The valve offers environmental protection against the ingress of liquids, dusts or any other foreign matter (environmentally-protected construction)
- Can be externally piloted (external air pilot supply) to convert valve to zero minimum operation by flipping a gasket
- The solenoid valves satisfy all relevant EC Directives



STANDARD VOLTAGES

DC (=) :

24V; 125V(HC)

AC (-) : SC, VC, EF/VCEF, EV/VCEV, Redhat II
NF/WSNF

110V/50Hz-120V/60Hz; 220V/50Hz-240V/60Hz
115V/50Hz; 120V/60Hz; 230V/50Hz

SPECIFICATIONS

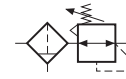
Pipe Size	Orifice Size	Flow Coefficient Kv		Operating Pressure Differential (bar)			Power Level	Prefix					No Prefix	Catalog Number	Options
				Min. ⁽¹⁾	Max. (PS)			SC	PV	EF/VCEF ⁽²⁾⁽³⁾	NF/WSNF	NFET/WSNFET			
					~	=								Aluminium	
1/2	13	3.15	52.5	0/2	10	10	BP	-	•	-	•	•	-	❖553A417	SL
1/2	13	3.15	52.5	0/2	10	10	BP	•	-	•	-	-	•	❖553G417	-
1/2	13	3.15	52.5	0/2	10	10	LP	•	•	-	•	•	-	❖553A317 ⁽²⁾	SL
1/2	13	3.15	52.5	0/2	10	10	LP	-	-	•	-	-	•	❖553G317 ⁽²⁾	-
1/2	13	3.15	52.5	0/2	10	10	LP	-	-	•	-	-	•	❖553H317 ⁽²⁾	-

• Available Express

❖ Stands for options "8" for NPT port thread and "G" for BSP port thread

(1) Zero minimum is only achieved if external pressure is applied

(2) DC only



FEATURES

- Stainless steel filter, regulator and filter regulator intended for corrosive environment and suitable for use in potentially explosive atmosphere caused by gases, vapours, mists and / or dust according to: (ATEX directive 2014/34/EU).

SAFETY CODE:

- II 2GD IIC T100°C (T5), with 90°C ambient temperature
- II 2GD IIC T85°C (T6), with 75°C ambient temperature (ZONE 1-21) Explosion group IIC
- Functional safety: IEC 61508, SIL certified
- Comply with the European essential health and safety requirements (EN13643-1)
- All internal metal parts made of 316 / 316L stainless steel
- Built-in overpressure relieving function, non-relieving option available
- 316L Stainless steel body, bonnet and bowl
- Internal springs made of INCONEL® to suit sour gas environment complying to NACE MR0175 / ISO 15156*

* Available for High Flow SSFR as an option

INCONEL is trademark of the Special Metals Corporation group of companies



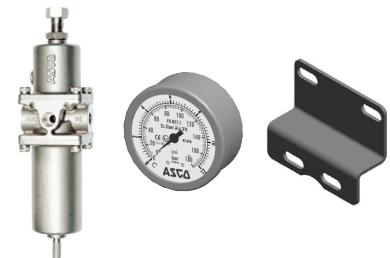
PRODUCT CODE

	342	A	8	0	0	1	AD
Product Series 342							Options AD = Automatic drain AN = Automatic drain with 1/8" NPT Adapter G = 316 SS pressure gauge ^{(1) (2)} MB = 316L SS mounting bracket ⁽²⁾ AD + AN is not a possible combination
Revision Letter A = Initial release							Filtration/Port Size 1 = High flow 1/4" NPT 25 µm or regulator only 3 = High flow 1/2" NPT 25 µm or regulator only 5 = High flow 1/4" NPT 5 µm 7 = High flow 1/2" NPT 5 µm 9 = Compact basic flow 1/4" NPT 25 µm B = Compact basic flow 1/4" NPT 5 µm
F/R/FR Type 8 = SS filter regulator (FR)							
Pressure Relief/Vent Hole 2 = ØM5 Thread							
Certifications & Approvals 0 = ATEX 1/21 Only							

⁽¹⁾ For Compact SSFR, a 316 SS pressure gauge with Ø50mm dial and 1/8" NPT gauge port will be delivered.
⁽²⁾ Not mounted onto the product. Separate packaging.

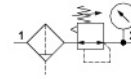
ORDERING EXAMPLE

1. High-Flow stainless steel filter regulator (1/4 NPT, 25 µm filtration) with auto drain, pressure gauge & mounting bracket
 - Product Code: 342A8201ADGMB
2. Compact low temperature stainless steel filter regulator (1/4 NPT, 25 µm filtration) with low temperature pressure gauge & mounting bracket
 - Product Code: 342A8209GLTMB



MAXIMUM FLOW VALUES

Construction Type	Maximum Flow Values Following ISO Standards 5782, 6358 and 6953	Compact		High Flow			
		Litres Per Minute (ANR)					
		1/4 NPT		1/4 NPT		1/2 NPT	
		5 µm	25 µm	5 µm	25 µm	5 µm	25 µm
Filter	Inlet pressure = 6.3 bar and Δ P = 1 bar	-	-	1780	2600	1800	3300
Regulator	Inlet pressure = 10 bar, setpoint = 6.3 bar and Δ P = 1 bar	-	-	3120		7800	
Filter Regulator	Inlet pressure = 10 bar, setpoint = 6.3 bar and Δ P = 1 bar	1280	1400	2380	2450	3920	4430

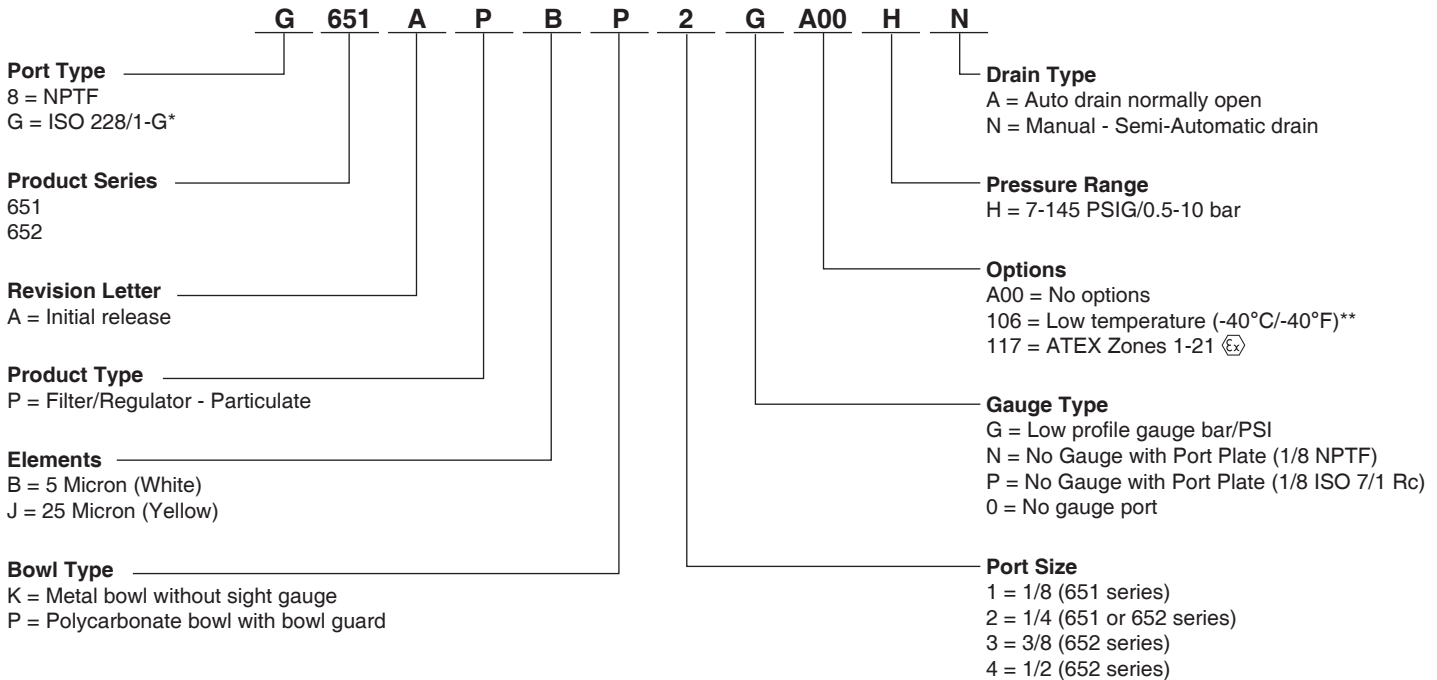


FEATURES

- High flow with a wide range of adjustable output pressure ranges
- Optional low profile gauge, round gauge, digital gauge or digital pressure switch
- Optional extended temperature range of -40°F to 176°F (-40°C to 80°C)
- Sintered polyethylene elements, with centrifugal separator, include 5 and 25 microns
- Threaded ports allow for individual or modular mounting
- Innovative two position plastic drain with manual and semi-automatic functions. Additional drains include an automatic style (brass)
- Polycarbonate and aluminum bowls with a selection of sight gauge materials that meet industry and application requirements
- Key lockable and tamper resistant models
- Air purity class according to ISO 8573-1: 2010



HOW TO ORDER



* Conforms to ISO standards 1179-1

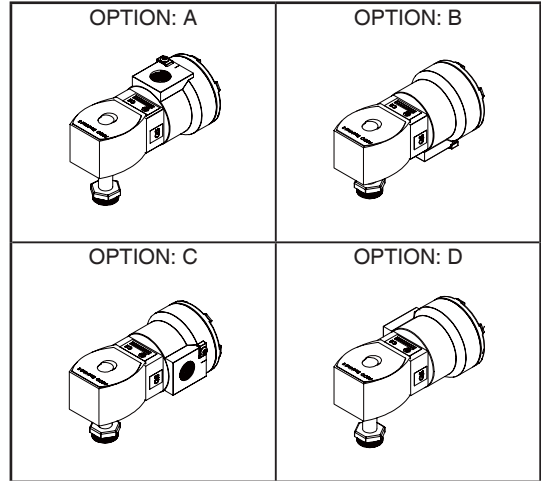
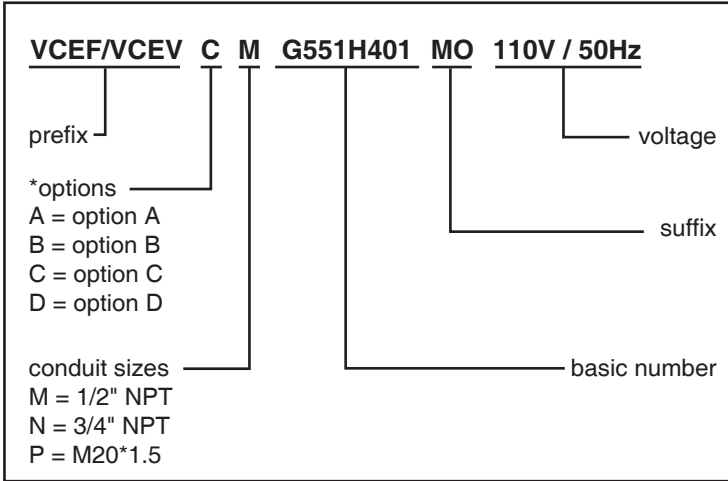
** Compressed air must be dry enough so no ice formation is present on the product.
All bowls should be emptied prior to ambient temperatures dropping below 32°F (0°C)

TECHNICAL INFORMATION - VCEF&VCEV INSTALLATION

ORDERING EXAMPLES VALVES

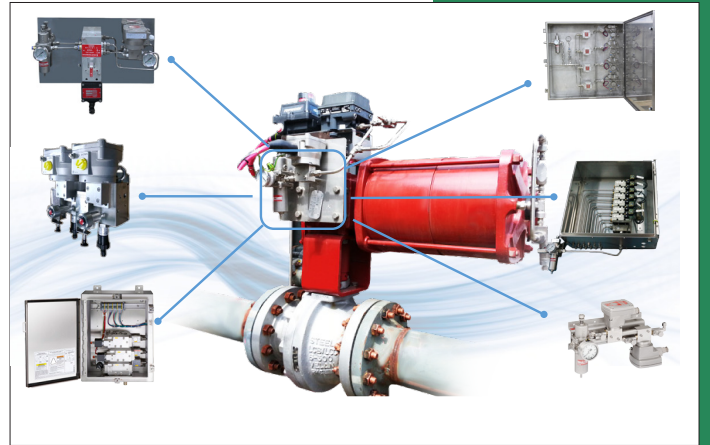
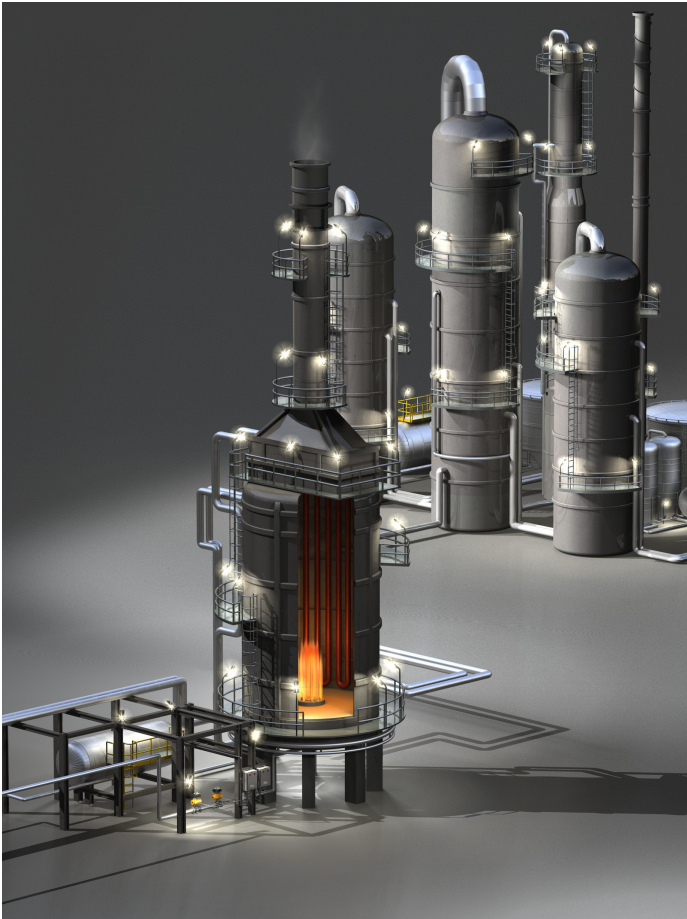
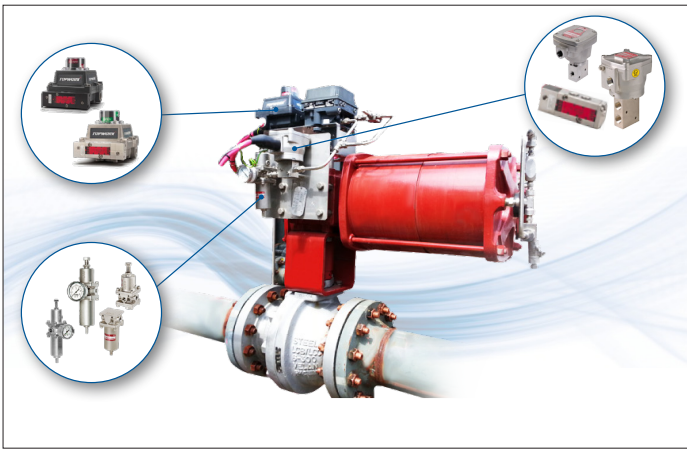
Add prefix corresponding to specific conduit size required to any RedHat II valve catalog number & specify the voltage.

*options



INSTALLATION

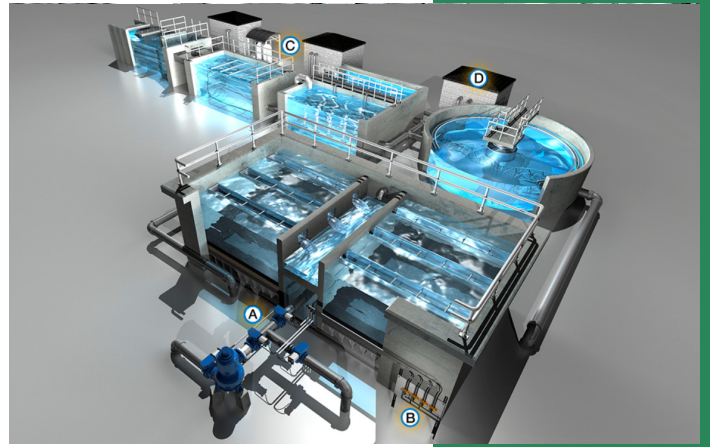
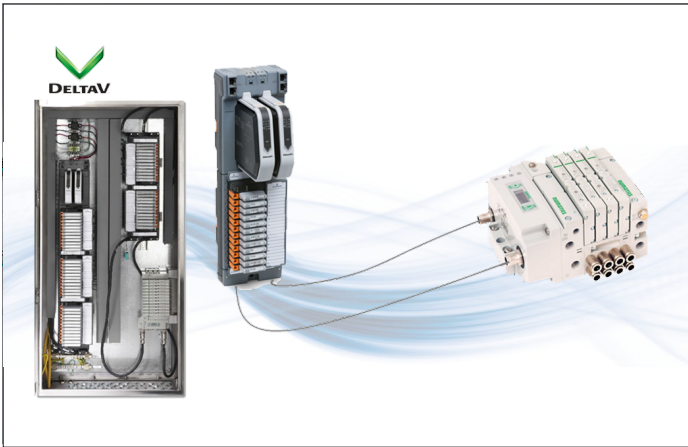
- Installation/Maintenance instructions are included with each valve
- The solenoid operators can be mounted in any position without affecting operation
- For optimum life and performance, the solenoid should be mounted vertically and upright to reduce the possibility of foreign matter accumulating in the solenoid base sub-assembly area
- Internal and external earthing connection



ASCO broad range of fluid automation solutions

- 1 - One-stop solution provider
- 2 - Valve actuation control
 - * Control Valves applications
 - * ON/OFF Valves
- 3 - Refining
 - * Process heater
 - * Desulphurization operations
 - * Flaring systems
 - * Coking units
- 4 - Customised solutions
 - * Emergency shutdown system
 - * Online diagnostic testing
 - * Process valve automation
 - * Safety instrumented system / critical application

APPLICATION



ASCO broad range of fluid automation solutions

- 1 - Process automation control
 - * Unique solution for easy integration of pneumatic systems
- 2 - Water & wastewater
 - * Reservoir pump
 - * Sludge pumping
 - * Pumping & blowers
 - * Pumps & chemical dispersion
 - * Municipal water conditioning/chlorination systems
- 3 - Food & beverage
 - * Processing
 - * Infrastructure / Utility
 - * Packaging
 - * Water treatment
- 4 - ASCO solutions (Bespoke solutions)
 - * Cabinet mount

APPLICATION



ASCO

Asia Pacific Contacts

Australia	61 - 2 - 9454 - 6400
China	86 - 21 - 3338 - 7300
India	91 - 44 - 6633 - 7300
Japan	81 - 798 - 65 - 6361
South Korea	82 - 234 - 83 - 1570
New Zealand	64 - 9 - 441 - 0870
Singapore	65 - 6556 - 1100
Taiwan	886 - 2 - 8912 - 1233
Thailand	66 - 2962 - 7484
Malaysia	60 - 3 - 7949 - 9228
Philippines	63 - 2 - 479 - 5100
Vietnam	84 - 8 - 6290 - 3034
Indonesia	62 - 21 - 2966 - 6242

